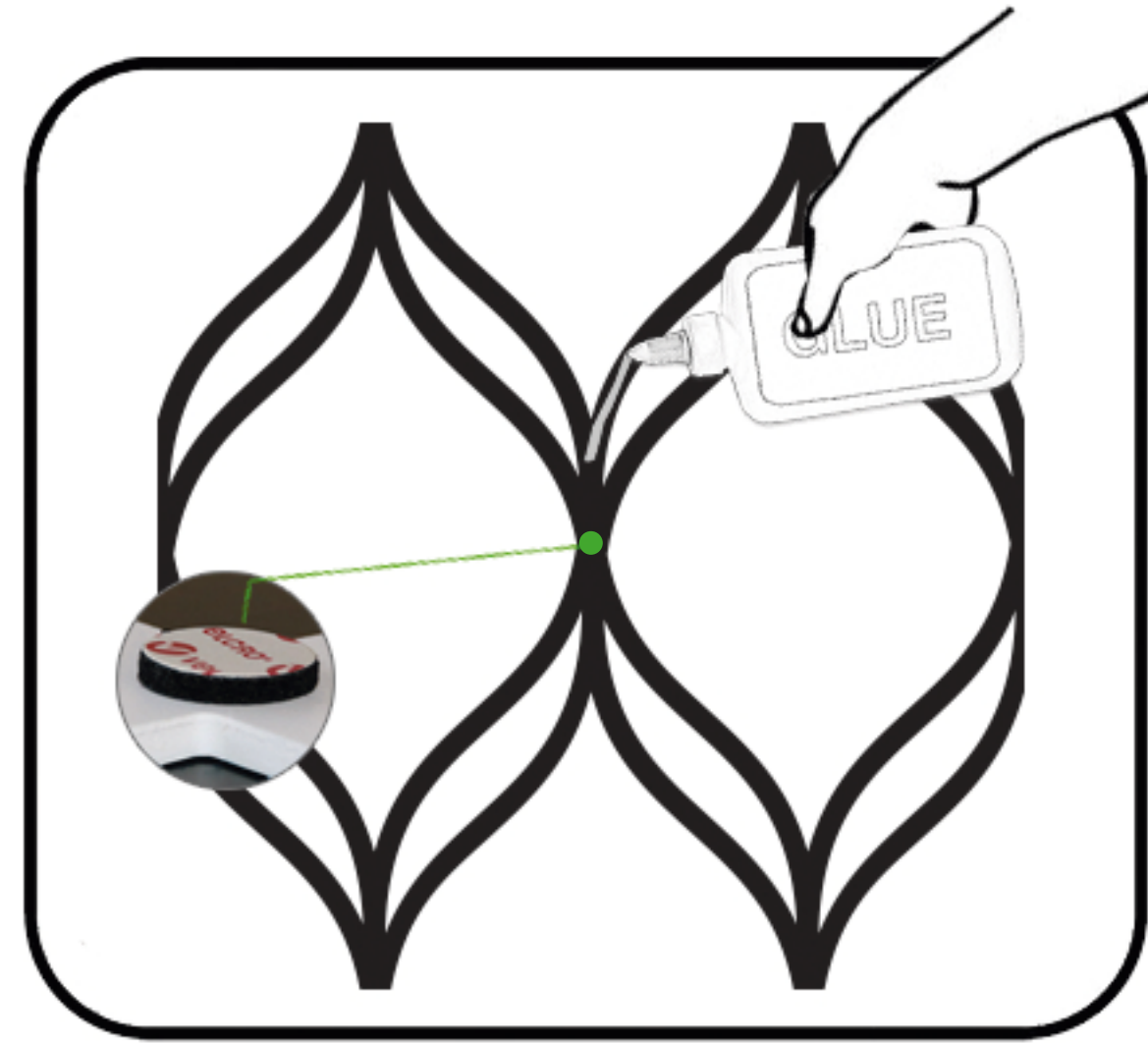


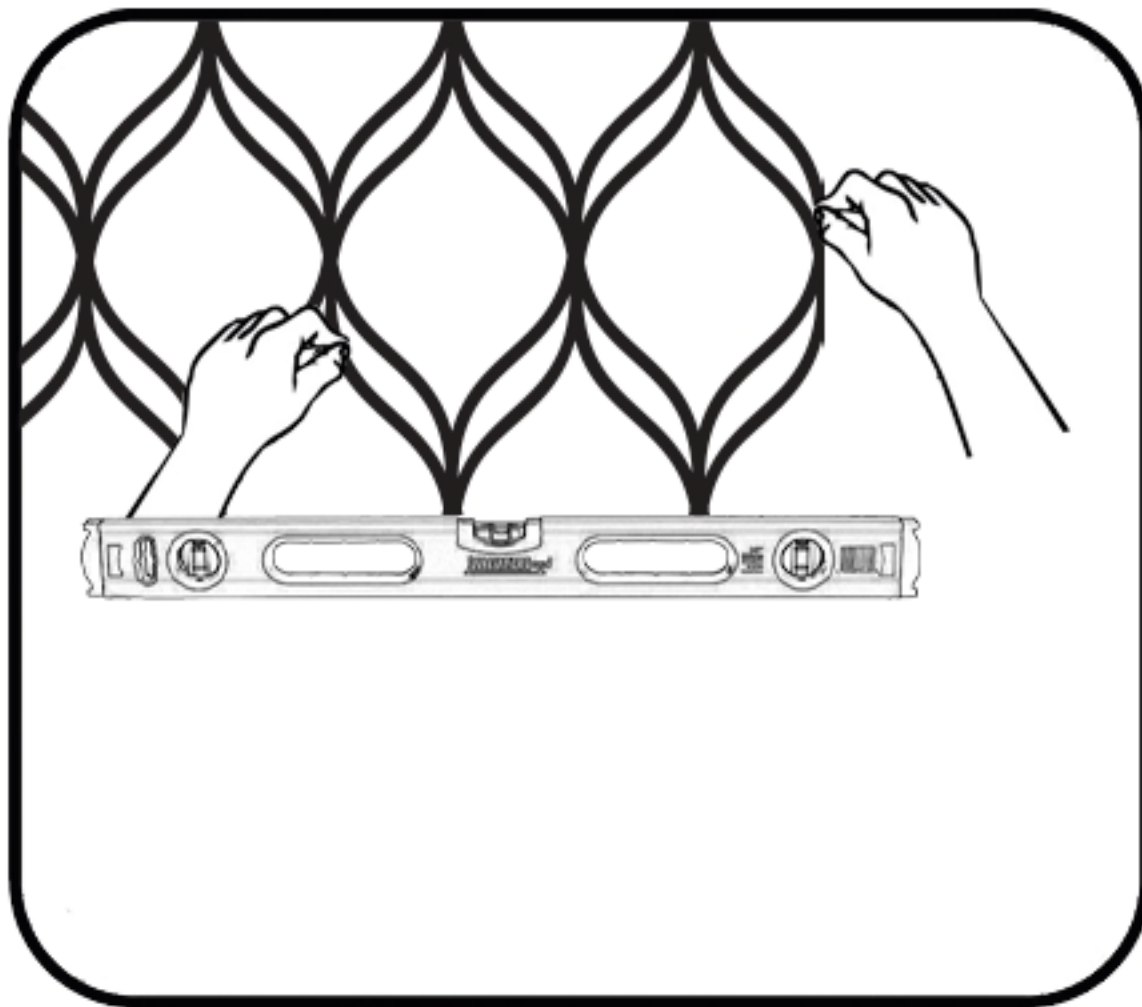
# 3D WAL PANELS



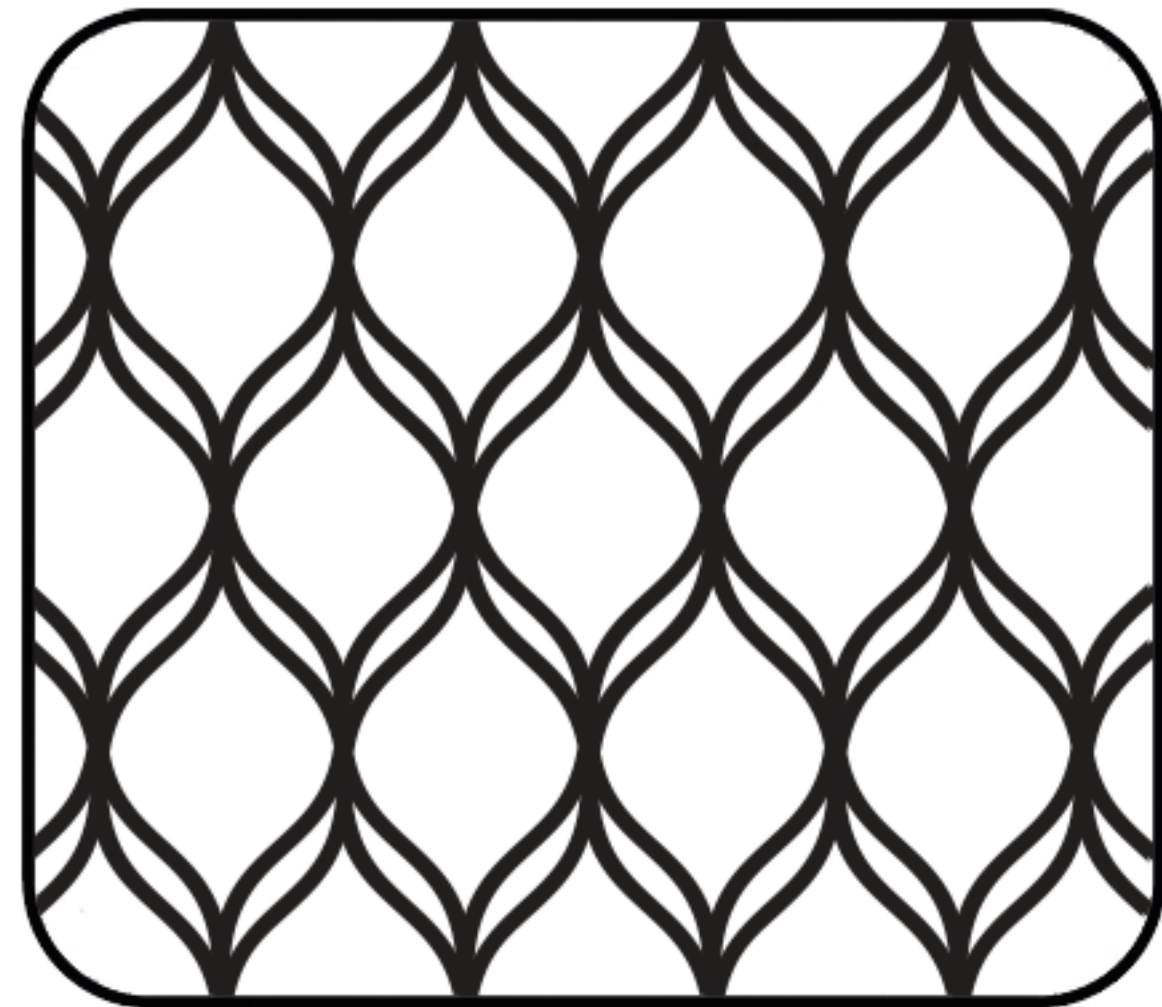
1. Clean the surface, make sure the surface is free of dust, dirt and moisture. Let it dry.



2. Apply the Velcro pieces where you think it's best or use a glue of your choice. You may use liquid nail glue, double-sided tape, silicone or stainless steel nail.



3. Start the application aligning the panel on the top left corner of the wall. Make sure it is leveled and will work with the panel you will apply on the right and bottom. Now you are ready to apply.



4. Once the first panel is installed the next one should be side-by-side to the first one and that is it. It's done!